

PITITINGA RIO GRANDE DO NORTE BRASIL



April 18th — April 30th



AYAHUASCA RETREAT WITH

Sulmira & Wilmer Vela Hidalgo

Price of one ceremony
\$ 230

\$ 120 per person per day

Accommodation and special shaminic diet.

Breakfast and light lunch included.

Without making ceremony

Lunch: \$ 15

Dinner: \$ 20

YOGA PROGRAM

with coach ABDEL MEGROUS

Yoga Instructor formation Brahmani school yoga Anjuna India
with extensive experience on the Cote d'Azur

Price of 10 lessons

\$ 400

7:30 – 9:00 before BREAKFAST

(meditation, pranayama, yoga asanas)

16:30 – 18:00 before DINNER

yoga on the beach (kundalini)

INDIVIDUAL COACHING

\$ 80 max. 2 person

YOGA PACKAGE	<p>meditation, pranayama, yoga asanas kundalini</p> <p>INDIVIDUAL COACHING</p>	<p>\$ 400</p> <p>\$ 80</p>
HORSE RIDING	MARACAJAÚ	<p>\$ 30 (PER PERSON)</p>
TAO PARADISE Instagram: taoparadise_brasil	<p>ONE DAY EXCURSION INCLUDING TRANSFER & LUNCH (MINIMUM 6 PEOPLE 4 PEOPLE PER CAR)</p>	<p>\$ 100 (PER PERSON)</p>
GENIPABU DUNES	<p>ONE DAY EXCURSION INCLUDING LOBSTER LUNCH AND TRANSFER WITH DUNES BUGGY CAR (MAX 4 PEOPLE PER CAR)</p>	<p>\$ 100 (PER PERSON)</p>



01/05 - 03/05/2020

Unique opportunity to travel to the
island located
under the patronage of UNESCO -
FERNANDO DE NORONHA
(40 min. flight from Natal)

When booking at Country Club Pititinga, please let us know if you would like to visit the island of Fernando de Noronha, in order to arrange flight and accommodation in advance, due to limited entry.

BOOKING AND CONTACTS

INTERNATIONAL BOOKING

EMAIL: res@ccpititinga.com

WHATSAPP: +39 3428215746

SOUTH AMERICA AND BRAZILIAN BOOKING

EMAIL: info@countryclubpititinga.com

WHATSAPP: +55 8491012282

VISIT US

WEBSITE: [HTTP://WWW.COUNTRYCLUBPITITINGA.COM](http://www.countryclubpititinga.com)

YOUTUBE: http://www.youtube.com/watch?v=sCa_7Gbuvc

CONTACTS

RESORT PHONE NUMBERS + 55 84 99101-2282 +55 84 99857-7383

RECEPÇÃO PHONE NUMBER + 55 84 3261 4313

SPECIAL ENGLISH ASSISTANT FOR MORE INFORMATION ABOUT RETREAT

GUSTAVO CLOZEL +55 84 9117 7384

GCLOZEL@HOTMAIL.COM

ELMIRA +7 916 948 38 37

INFO CERIMONIES/DIETS/COSMOS-ENERGY

HOW TO REACH US FROM EUROPE

TAP: LISBOA-NATAL (DIRECT FLIGHT 7H)

TAM/TAP: FROM VARIOUS CITIES THROUGH ST. PAOLO OR RIO DE JANEIRO

PAYMENTS

NO REFUNDABLE DEPOSIT OF \$ 250, IS PAYABLE IMMEDIATELY TO BOOK YOUR SPACE.

REMAINING BALANCE IS PAYABLE DIRECTLY IN OUR FACILITY OR THROUGH:



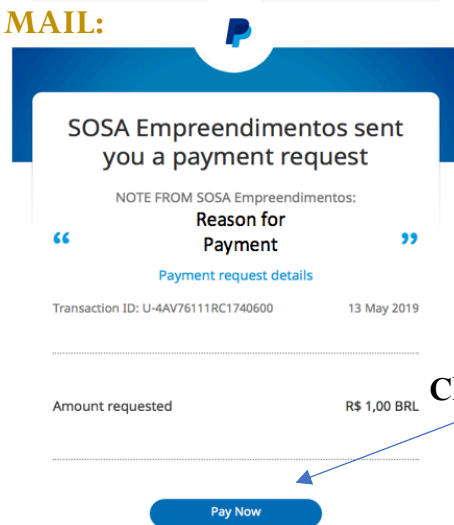
COUNTRY CLUB WILL SEND THE LINK TO DO THE PAYMENT

PAYMENTS

FIRST STEP:

We will send to you a mail through **service@paypal.com.br** or through SMS
Then open the mail and the amount to be paid and the reason for payment
will already entered (like in the photo below)

MAIL:



SMS:

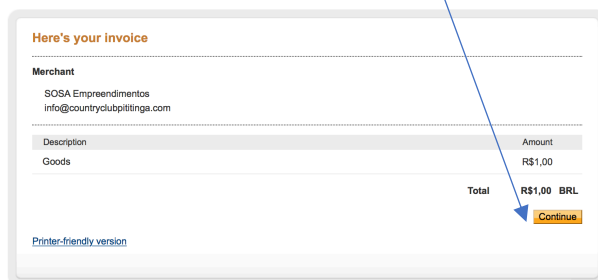


OR Click on **ON THE LINK**

Click on **PAY NOW**

SECOND STEP: Click on CONTINUE

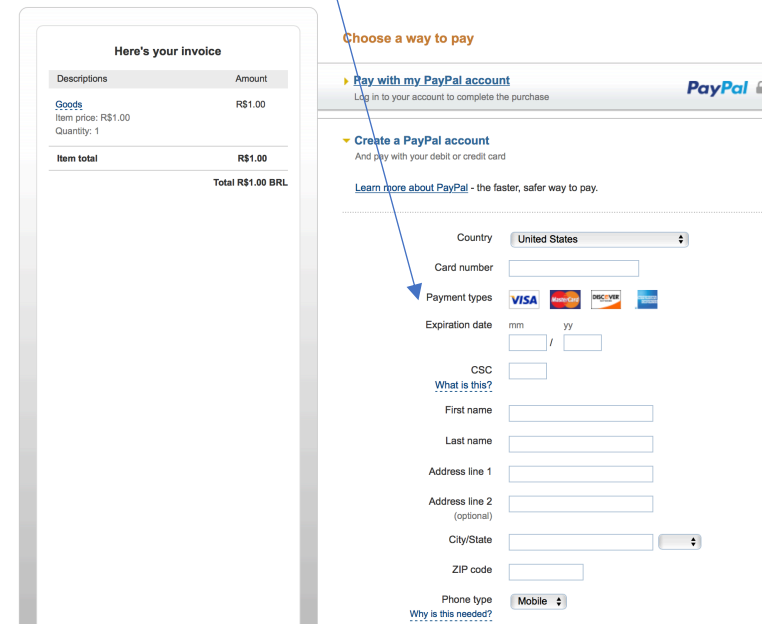
SOSA Empreendimentos



Secure payments by **PayPal**

THIRD STEP:

You can pay through credit card:



Or if you have a PayPal account, you can easily pay through it:

